



## Dadswood, Harlow, CM20 1JL Offers In Excess Of £185,000 Leasehold

Kings Group - Harlow are delighted to offer this ONE BEDROOM, TOP FLOOR APARTMENT for sale.

Ideally located in the heart of Harlow Town Centre at Dadswood, this property is just a stone throw away from a variety of high street shops, restaurants, 24 hour supermarket as well as a choice of affordable gyms. Not only is this property in a great location for leisure, it is also within walking distance to Princess Alexandra Hospital (0.3 miles- 12 minute walk) and Harlow Town Station (0.7 miles - 30 minute walk), which offers fast links into London Liverpool Street with connections to the Victoria Line at Tottenham Hale, along with fast links to London Stansted Airport and Cambridge.

In our opinion this property would make an ideal first time or investment purchase with the opportunity to keep the tenant in situ giving you an immediate income.

The accommodation comprises lounge/diner, kitchen with fitted appliances, double bedroom and bathroom. The property benefits from having a security entry phone system and loft space.

# Dadswood, Harlow, CM20 1JL

## **Entrance Hall approx 6'99 x 5'69 (approx 1.83m x 1.52m)**

Laminate flooring, telephone point, smoke alarm, airing cupboard with boiler

## **Bathroom 3'64 x 5'72 plus 2'20 x 2'47 (0.91m x 1.52m plus 0.61m x 0.61m)**

Tiled flooring, extractor fan, panel enclosed bath with mixer tap and shower attachment, wash hand basin with mixer tap and vanity unit underneath, low level flush WC, tiled walls, textured ceiling

## **Lounge 10'18 x 14'1 (3.05m x 4.29m)**

Double Glazed Windows, Single radiator, Laminate Flooring, Power Points, Textured Ceiling

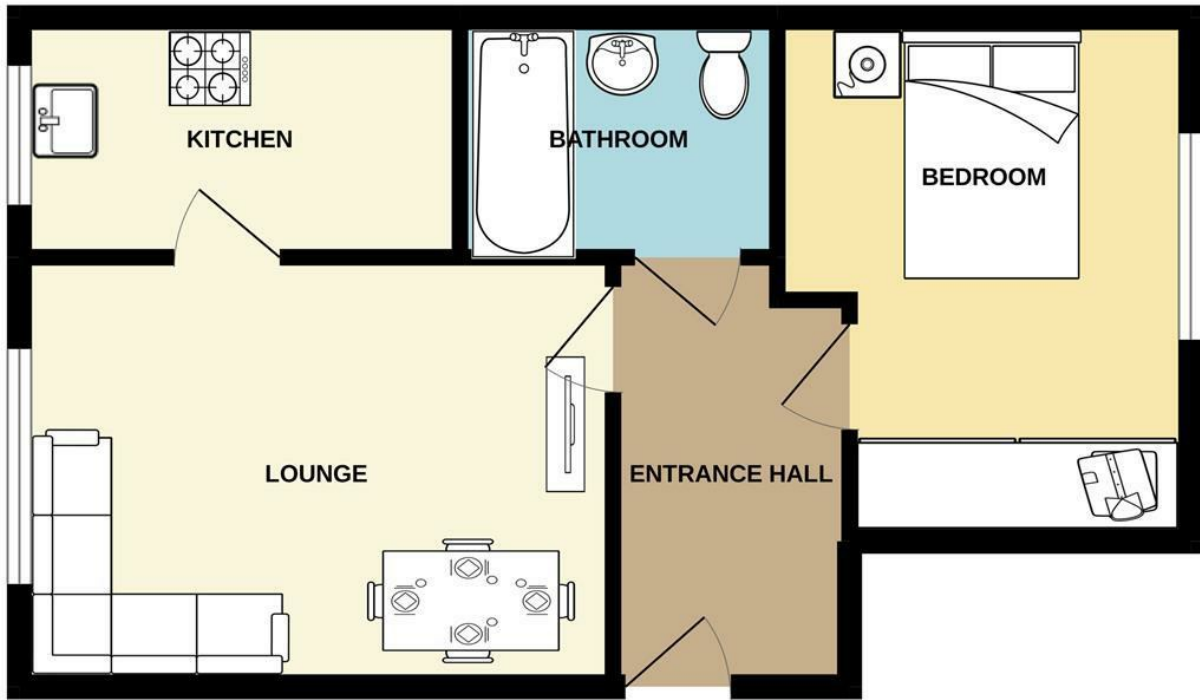
## **Kitchen 10'05 x 5'88 (3.18m x 1.52m)**

Double glazed windows, tiled flooring, range hood wall and base units with roll top work surface, tiled splash backs, integrated electric oven with electric hob, sink with drainer unit, space for a fridge/freezer, integrated washing machine, textured ceiling

## **Bedroom 10'34 x 9'84 (3.05m x 2.74m)**

Double glazed window, laminate flooring, built-in wardrobe, power points, textured ceiling

GROUND FLOOR  
38.2 sq.m. (412 sq.ft.) approx.



TOTAL FLOOR AREA : 38.2 sq.m. (412 sq.ft.) approx.

Whilst every attempt has been made to ensure the accuracy of the floorplan contained here, measurements of doors, windows, rooms and any other items are approximate and no responsibility is taken for any error, omission or mis-statement. This plan is for illustrative purposes only and should be used as such by any prospective purchaser. The services, systems and appliances shown have not been tested and no guarantee as to their operability or efficiency can be given.  
Made with Metropix ©2022

